

CHAD S. FREY

JANUARY 2003 - DECEMBER 2004

VOLUME 6, ISSUE 1

AVAILABILITY

Available NOW!

RECENT CREDITS

(2004)

Columbia Pictures
Memoirs of a Geisha
Set Designer
(Production Designer John Myhre)

Walt Disney Pictures
Sky High
Lead Set Designer
(Production Designer R. Bruce Hill)

HBO Television
Big Love
Set Designer
(Production Designer Dennis Washington)

Showtime
Huff
Set Designer
(Production Designer Joseph Lucky)

Fox Television
House
Set Designer
(Production Designer Mark Hutman)

GREETINGS!

Hello again and welcome to the
NEW, SHORTER NEWSLETTER!

As most of you know, I have spent the last 18 months following Hannah around the country as her work relocated her from coast to coast. Consequently, I have been unable to accept work as anything other than a Set Designer for over a year. Well we are now both back on the west coast for good and I can now make much longer commitments to shows.

If you or anyone you know is looking for an Art Director, Assistant Art Director or Set Designer for a current or upcoming project, please keep me in mind.

Thanks for reading,

— CHAD FREY —

NEW WEB-SITE:

www.freyart.us

NEW E-MAIL:

chad@freyart.us

TELEPHONE:

818-209-6959

WWW.FREYART.US

Warner Bros. has one...Universal has one...And now I have one too! A web-site!!!
(www.freyart.us)

You can use it to download my resume, view photos and drawings from my portfolio, read past issues of newsletters or simply keep tabs on what I am up to.

The web-site also means
a new look to the newsletter!

Gone are the days of the ten page mailings! I will continue to write articles detailing my experiences on shows and these longer articles will be available for viewing on-line. This method will provide me the opportunity to share more photographs and drawings than I can currently include in a newsletter...and it means less paper for you! In the future, when I complete a project, I will send out a short



VISIT ME ON-LINE!

mailing inviting you to see the work and read about the experience.

Please, go on-line and try it now.

412 N. KENWOOD ST - #202 - GLENDALE, CA - 91206 - TELEPHONE: 818-209-6959

FEATURE FILM PROJECTS (2004)



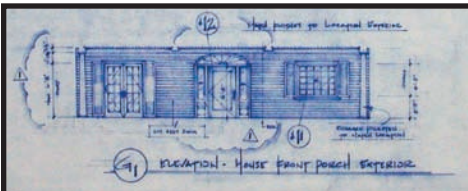
“CAFFETERIA” SET UNDER CONSTRUCTION

“SKY HIGH”

(Walt Disney Pictures)

April through early September of 2004 found me working as the Lead Set Designer on Disney’s feature film *Sky High*. The film is a somewhat campy comedy which centers on a high school for super-powered teens in a world where superheroes are an everyday occurrence. The film was Directed by **Mike Mitchell** (*Surviving Christmas*), Production Designed by **R. Bruce Hill** and Art Directed by **Will Hawkins**.

When all was said and done I was on the show for 20 weeks and I was directly responsible for designing 5 of the 7 stage sets, most all of the 8 locations and a number of the large mechanical effects items.



“STRONGHOLD HOUSE” SET DRAWING

FILM PROJECTS (2003)

“STARSKY & HUTCH”

(Warner Bro. Pictures)



“THE DISCO”
c. 1973

Production Designed by **Ed Verreaux**, Art Directed by **Greg Papalia** and Assistant Art Directed by **Chad Frey**, this film was released in March of 2004 and is now available on Video/ DVD.

“MEMOIRS OF A GEISHA”

(Columbia Pictures)

In October of 2004 I joined the art department of *Memoirs of a Geisha* as a Set Designer. The project was well along into principal photography and a large portion of the design work had already been completed.

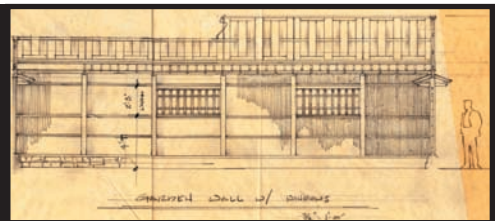


LOCATION BUILD

I was brought in to help design the ending of the film including stage sets and location work in San Francisco. It was a crash course in Japanese design. The Production Designer is **John Myhre** and Supervising Art Director is **Tomas Voth**.

“YUKIMOTO TEAHOUSE”

SKETCH ELEVATION



T.V. PROJECTS (2004)

“HUFF” (Showtime)

Huff is a series which I set designed for **Joe Lucky** (Production Designer) and **Phil Dagort** (Art Director). It is airing on *Showtime*.

“HOUSE” (Fox)

House is another new series that is airing this season. I was one of the set designers involved in the creation of the pilot back in March of 2004. Many of the original sets appear in the current series. The Production Designer is **Mark Hutman**.

“BIG LOVE” (HBO)

Making it three for three, *Big Love* (another pilot on which I set designed back in April) has been picked up by *HBO*. The pilot was Production Designed by **Dennis Washington** and Art Directed by **Tom Taylor**.